

**FOR LEASE**



**ALICO COMMERCIAL PARK, BUILD TO SUIT**  
7887 Drew Circle, Fort Myers, FL 33967

**FOR LEASE**

**LEASE PRICE**

\$6.50 PSF, plus \$3.00 PSF estimated CAM

**SIZE**

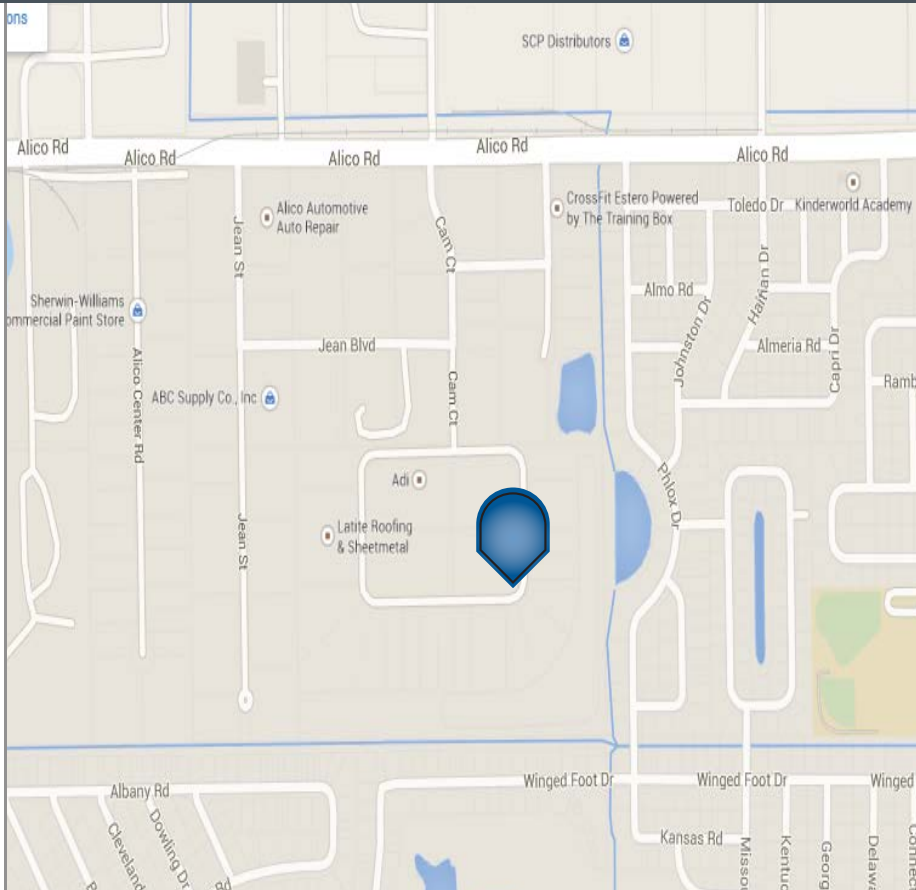
Lot Size: 1.46 Acres  
Space Avail: 2,000 SF - 6,150 SF

**UTILITIES**

Water & Sewer

**AMENITIES & DETAILS:**

- Strap#: 08-46-25-57-00000.0170
  - Zoning: IPD (Industrial Planned Development)
  - Building: Proposed Build-To-Suit
  - Property Use: Industrial
- Area Description: South side of Alico Road between US 41 and I-75. From Alico Rd. go south on CAM Court, follow around to the back and you will find Drew Circle. This lot is on the southeast corner of the curve making it one of the nicest sized lots in the park!
  - Property Description: Site is cleared and filled, Building permit PAID and active. Owner flexible with all options: Condo, Lease or Buy. 2,000 SF to 6,150 SF available to lease. Proposed building is 12,600 SF.



For more information, please contact:

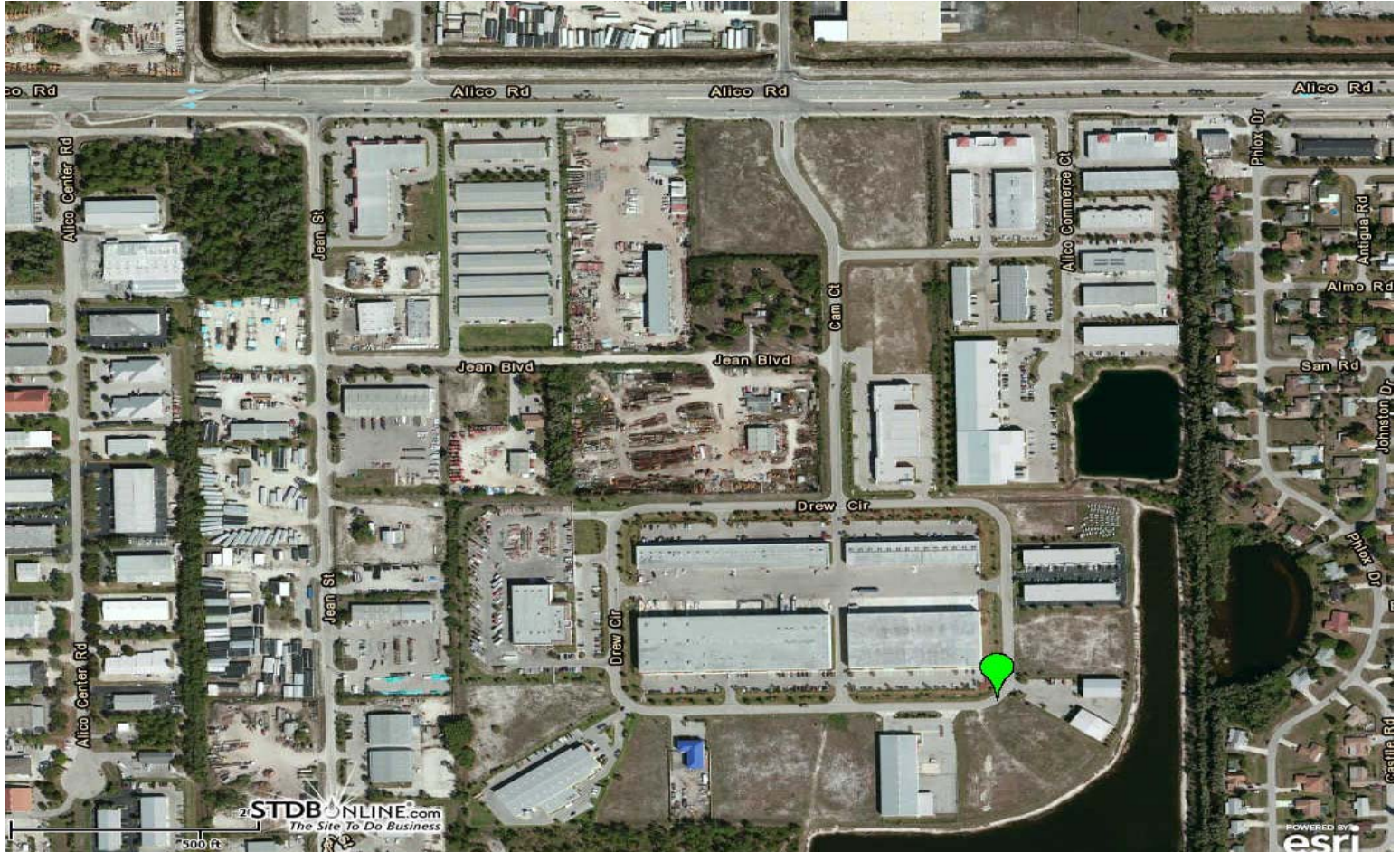
**Mary Kazor**  
Associate &  
Business Intermediary  
iCORE Global - Ft. Myers  
P: 239.466.7770 | C: + 239 233 1675  
F: 239.437.4469  
mary.kazor@icoreglobal.com

**BRAD WELBORN, CCIM**  
Commercial Real Estate Advisor &  
Business Intermediary  
iCORE Global - Ft. Myers  
P: 239.466.7770 | C: 239.850.6653  
F: 239.437.4469  
brad.welborn@icoreglobal.com

**Boback Commercial Group**  
COMMERCIAL PROPERTY MANAGEMENT  
A STRATEGIC PARTNER  
OF iCORE GLOBAL



# FLEX SPACE | INDUSTRIAL/OFFICE CONDO | MANUFACTURING MINI STORAGE | WAREHOUSE



POINTS OF INTEREST	MILES	MINUTES
US-41	2 MILES	3 MINUTES
I-75	2.4 MILES	4 MINUTES
SOUTHWEST FLORIDA INTERNATIONAL AIRPORT	7.3 MILES	15 MINUTES

2013 DEMOGRAPHICS	5 MINUTES	10 MINUTES	15 MINUTES
POPULATION	26,289	100,403	221,745
# HOUSEHOLDS	12,411	46,729	100,089
MEDIAN HH INCOME	\$49,764	\$51,682	\$53,797
MEDIAN AGE	43.5	46.6	48.5



For more information, please contact:

**Mary Kazor**  
Associate &  
Business Intermediary  
iCORE Global - Ft. Myers  
P: 239.466.7770 | C: + 239 233 1675  
F: 239.437.4469  
mary.kazor@icoreglobal.com

**BRAD WELBORN, CCIM**  
Commercial Real Estate Advisor &  
Business Intermediary  
iCORE Global - Ft. Myers  
P: 239.466.7770 | C: 239.850.6653  
F: 239.437.4469  
brad.welborn@icoreglobal.com

