

DOWNTOWN LEHIGH MEDICAL OFFICE

228 Plaza Drive, Suites C&D

Lehigh Acres, FL 33936



FOR LEASE: \$21/SQFT + 2.5% TAX

ABOUT THE PROPERTY

Multi-tenant medical/office building/complex in a landscaped courtyard setting. Suite C&D are combined 4257sf+/- . Currently operating as a medical family practice. Space consists of a blended mix of wet and dry exam rooms, doctors/administration office, reception, 2 separate lobbies, 7 separate baths for staff and patients, meeting and break rooms.

PROPERTY FEATURES

- ▣ Suites: C & D
- ▣ SQFT: 4,257
- ▣ Zoning: C-2 (Lee County)
- ▣ Parking: 24 shared spaces
- ▣ Occupancy March 1, 2025
- ▣ Traffic Count: 28,500 (AADT 2023)
- ▣ Strap #31-44-27-16-00000.0020



JIM BOBACK, CCIM
Broker/Owner

C 239-565-2616 • O 239-466-7770
JB@BobackCommercialGroup.com
www.BobackCommercialGroup.com

DOWNTOWN LEHIGH MEDICAL OFFICE

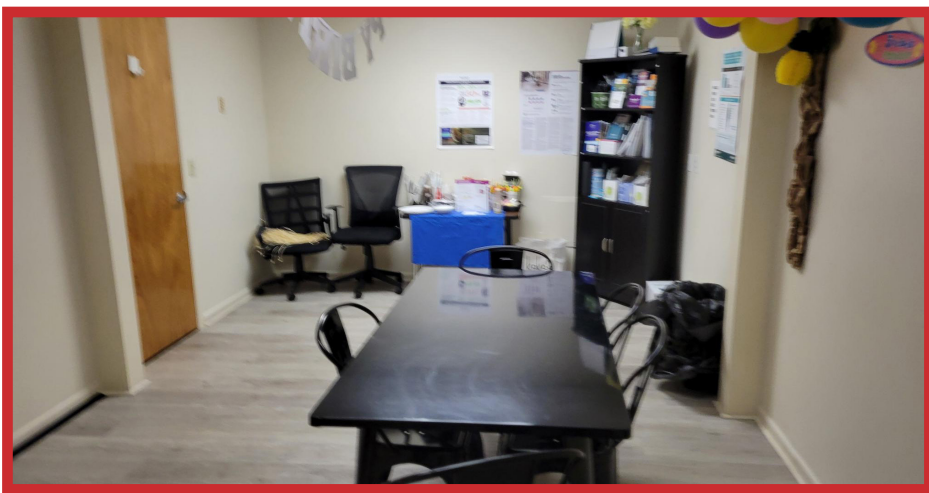
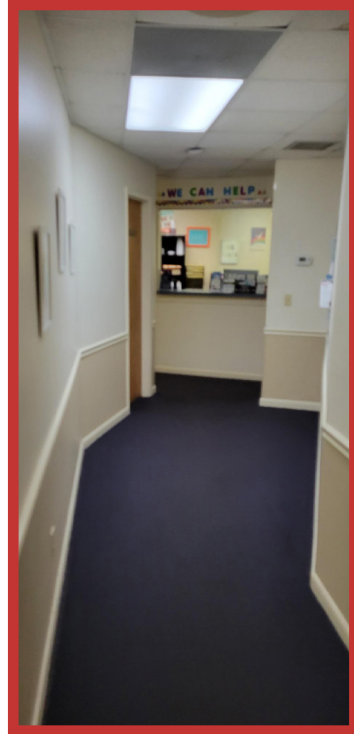
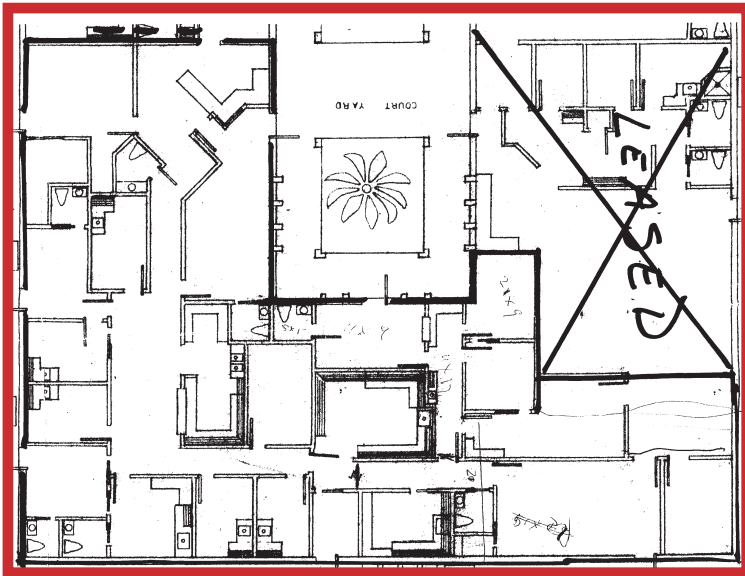
228 Plaza Drive, Suites C&D

Lehigh Acres, FL 33936

ABOUT THE PROPERTY

This busy medical & office center is situated in "downtown" Lehigh Acres and close to all business services, restaurants, banks and more. Lehigh Regional Medical Center is less than one mile away.

FLOOR PLAN



JIM BOBACK, CCIM
Broker/Owner

C 239-565-2616 • O 239-466-7770
JB@BobackCommercialGroup.com
www.BobackCommercialGroup.com